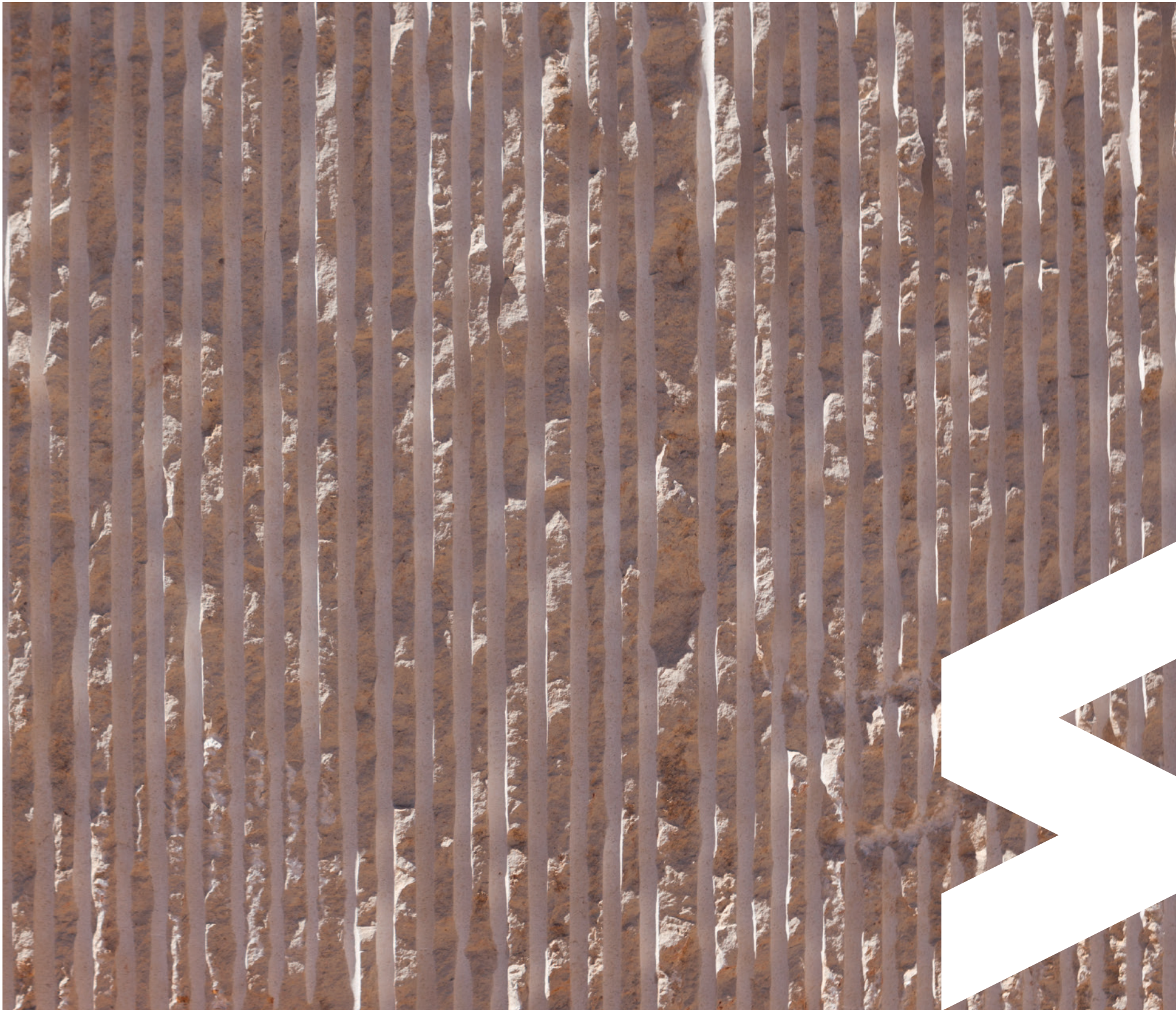




**STONE  
FOREVER**

Natural Variety



# QUEM SOMOS

A STONE FOREVER está localizada no centro de Portugal, na zona do maior maciço calcário da Península Ibérica, dedicando a sua actividade à extracção, transformação e comercialização de rochas ornamentais.

Recorrendo à mais recente tecnologia operada por recursos humanos qualificados e experientes, auferimos de uma grande capacidade de produção que nos permite uma resposta pronta e eficiente a um mercado nacional e internacional cada vez mais exigente, quer em quantidade, quer em qualidade.

Os nossos principais produtos são blocos, chapas e pedras cortadas à medida para variadas aplicações interiores e exteriores (fachadas, chão, etc.), nos mais diversos acabamentos.

Marcamos presença em diversas feiras internacionais e, fruto desta aposta, exportamos actualmente para os cinco continentes, satisfazendo os mais altos padrões de qualidade.

# WHO WE ARE

STONE FOREVER is located in the center of Portugal, right in the Iberian Peninsula largest limestone massif area, dedicating its activity to the extraction, processing and commercialization of ornamental stones.

Using the latest technology operated by qualified and experienced human resources, we assure a large production capacity, enabling us to respond promptly and efficiently to an increasingly demanding national and international market, either in quantity or quality.

Our main products are blocks, slabs and cut to size tiles for various indoor and outdoor applications (wall cladding, flooring, etc.) in a wide range of finishes.

We are present in diverse international fairs and as result of this bet we currently export worldwide, meeting the highest standards of quality.



Polido  
*Polished*



Amaciado  
*Honed*



Bujardado  
*Bush-hammered*

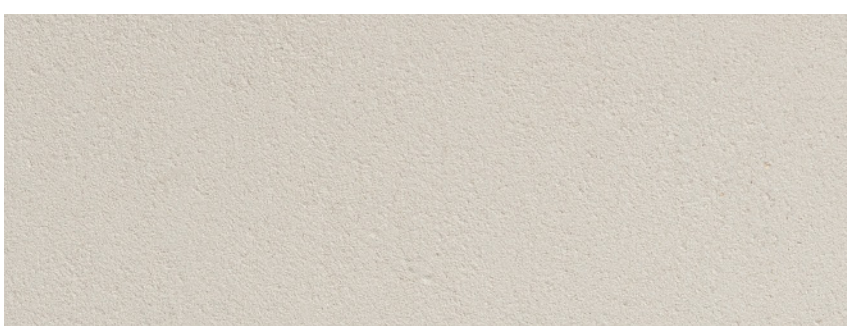
GASCOIGNE BEIGE



Polido  
*Polished*



Amaciado  
*Honed*



Areado  
*Sandblasted*

CODAÇAL



Polido  
*Polished*



Amaciado  
*Honed*



Escovado  
*Brushed*



GASCOIGNE BLUE

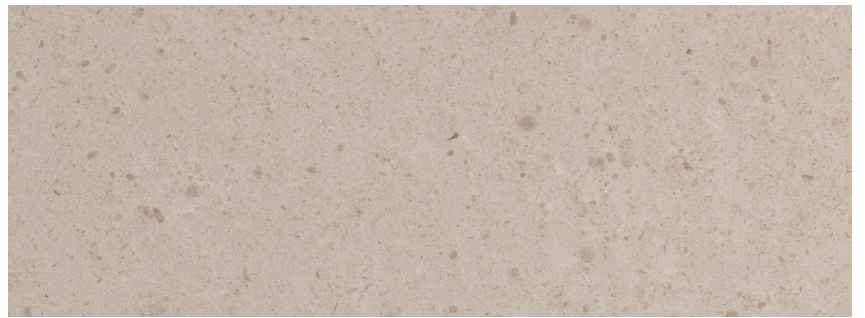
Polido  
*Polished*



Amaciado  
*Honed*



Escovado  
*Brushed*



MOLEANOS A5



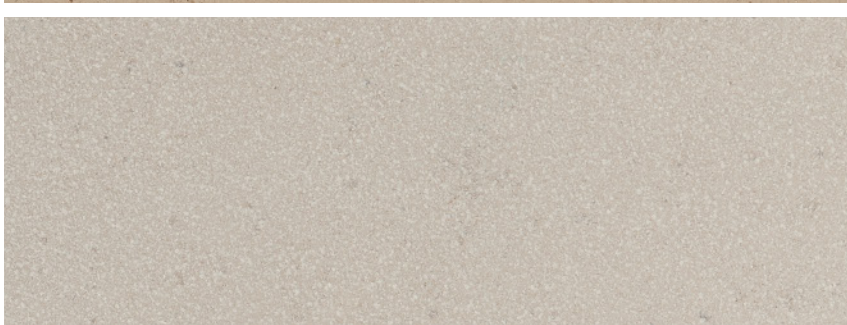
Polido  
Polished



Amaciado  
Honed

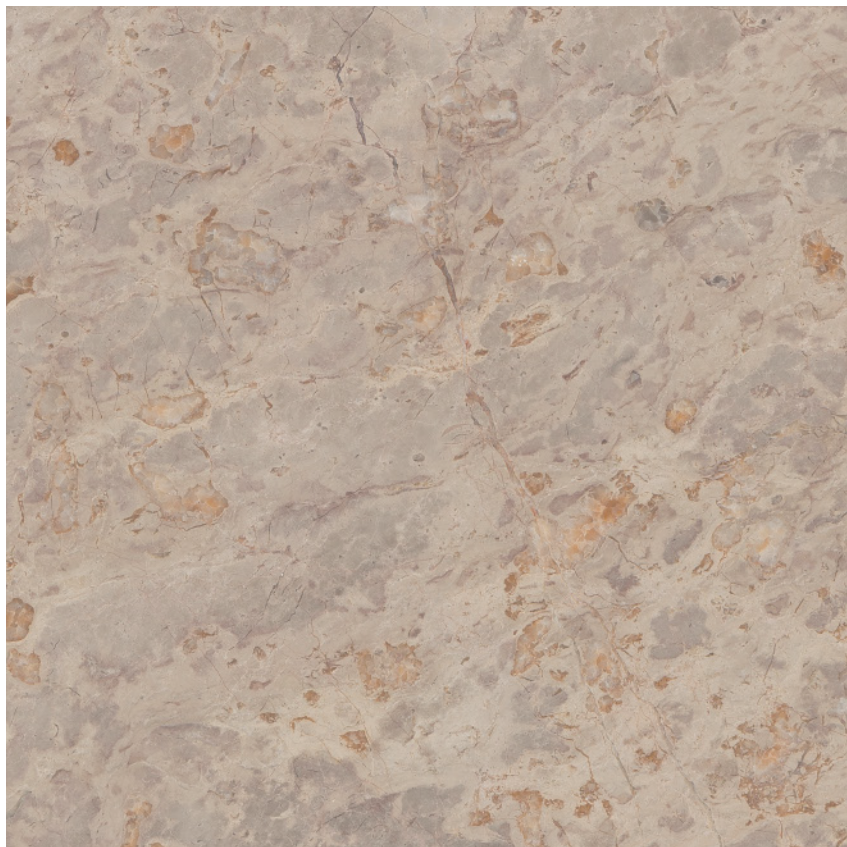


Areado + Escovado  
Sandblasted + Brushed



MOLEANOS A2

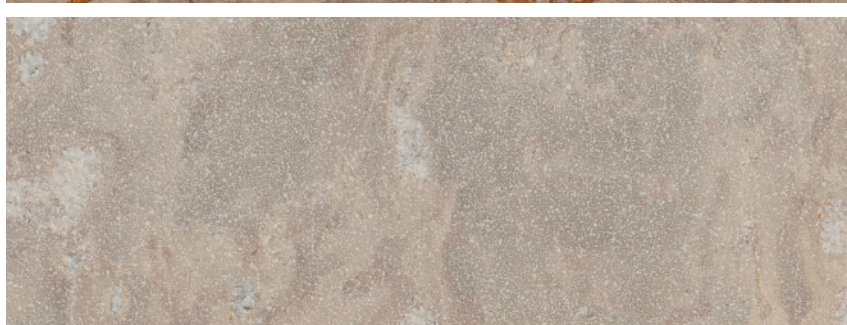
Polido  
Polished



Amaciado  
Honed



Areado + Escovado  
Sandblasted + Brushed

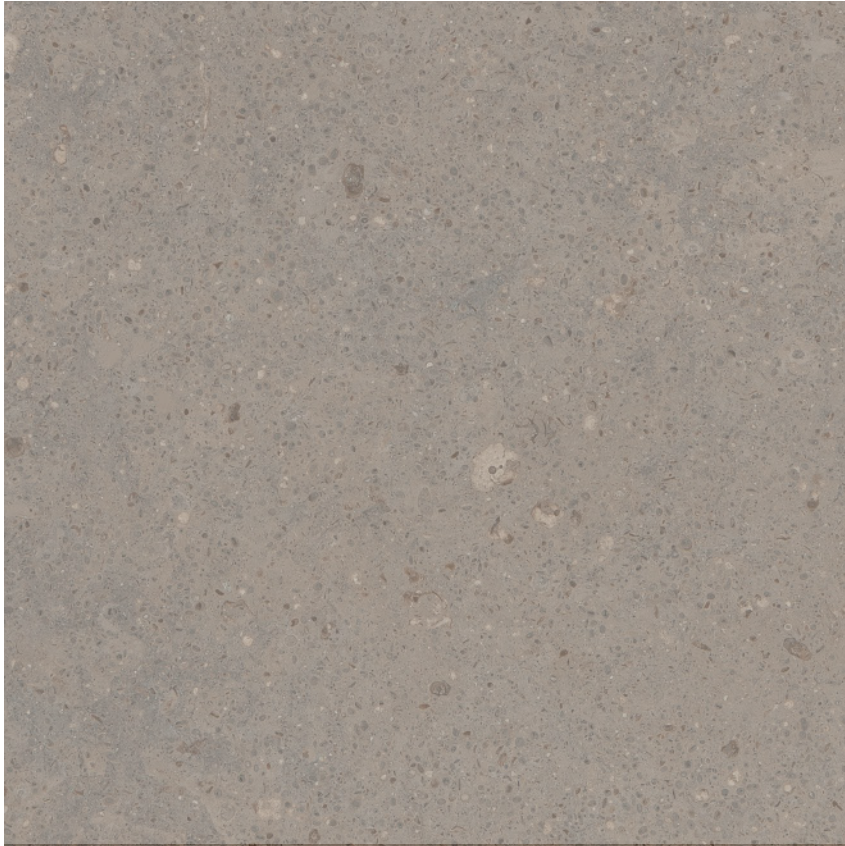


BRECHA STO. ANTÓNIO





Polido  
*Polished*



Amaciado  
*Honed*



Areado + Escovado  
*Sandblasted + Brushed*



CEZAR BLUE

Polido  
*Polished*



Amaciado  
*Honed*



Escovado  
*Brushed*

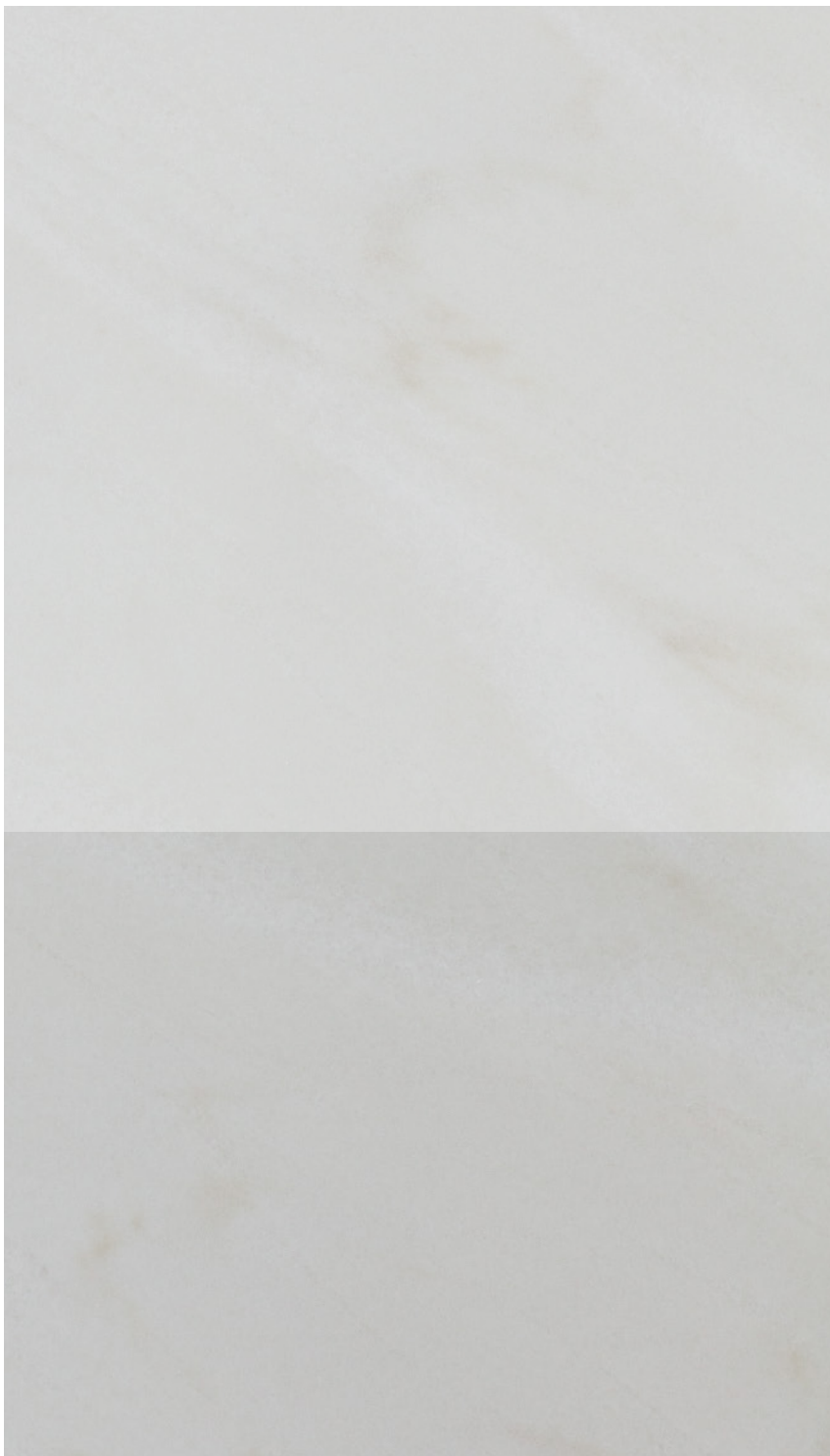


RELVINHA



Polido  
Polished

Amaciado  
Honed



ESTREMOZ BRANCO

Polido  
Polished

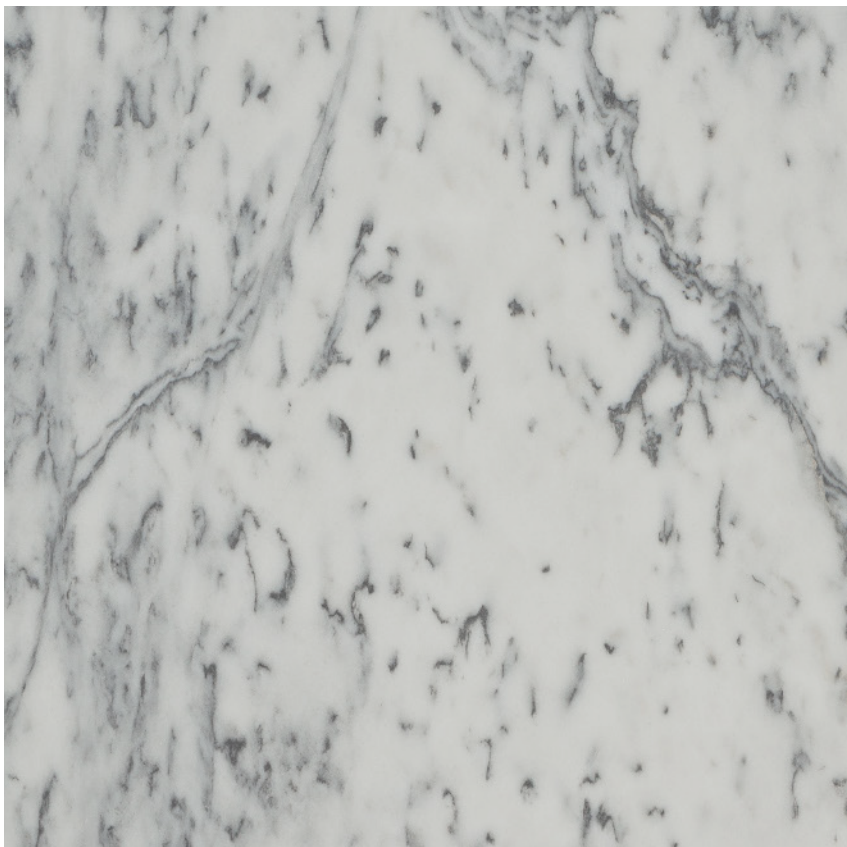
Amaciado  
Honed



ESTREMOZ ROSA



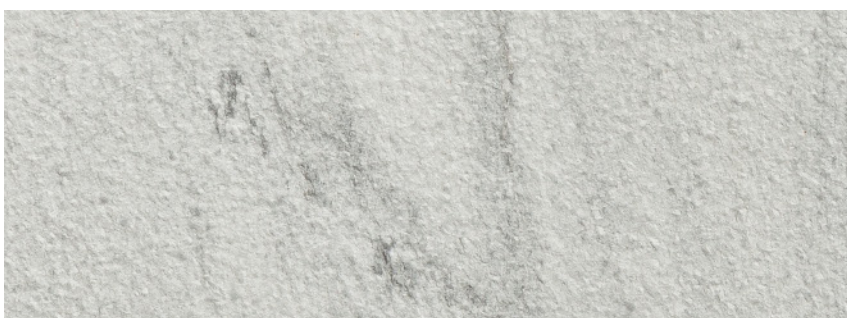
Polido  
Polished



Amaciado  
Honed



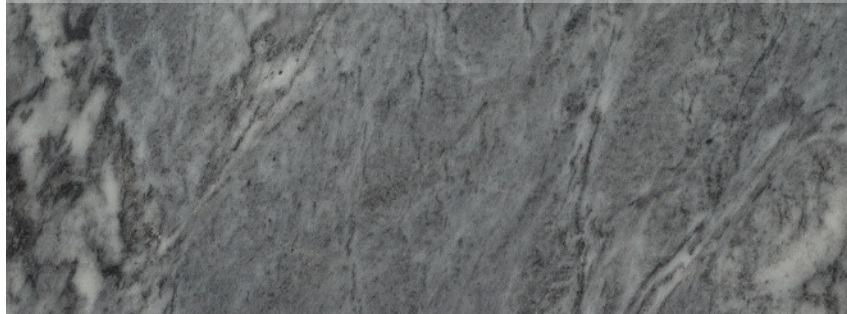
Bujardado  
Bush-hammered



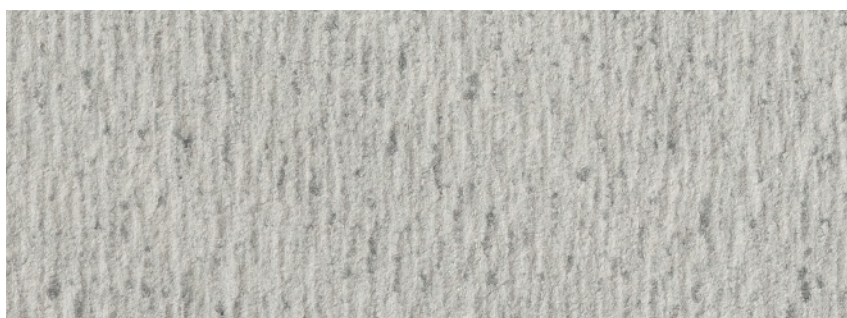
Polido  
Polished



Amaciado  
Honed



Riscado  
Scratched



PELE DE TIGRE

AZUL LAGOA









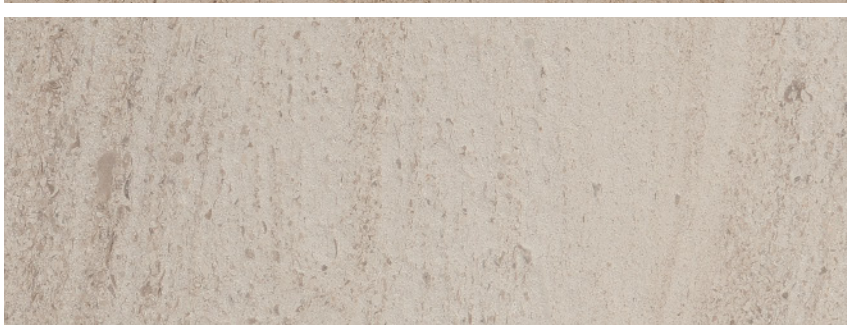
Polido  
*Polished*



Amaciado  
*Honed*



Escovado  
*Brushed*



MOCA CREME

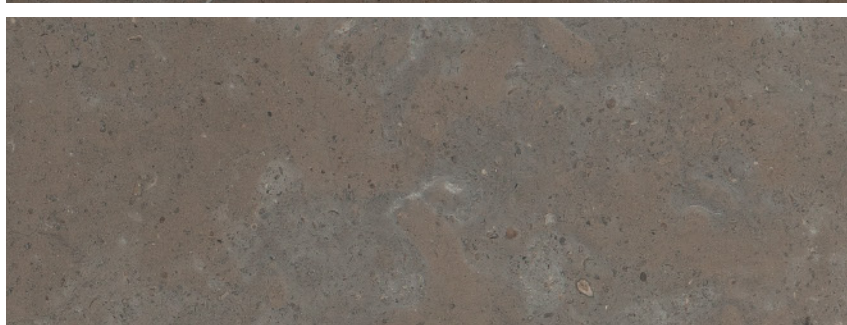
Polido  
*Polished*



Amaciado  
*Honed*



Escovado  
*Brushed*

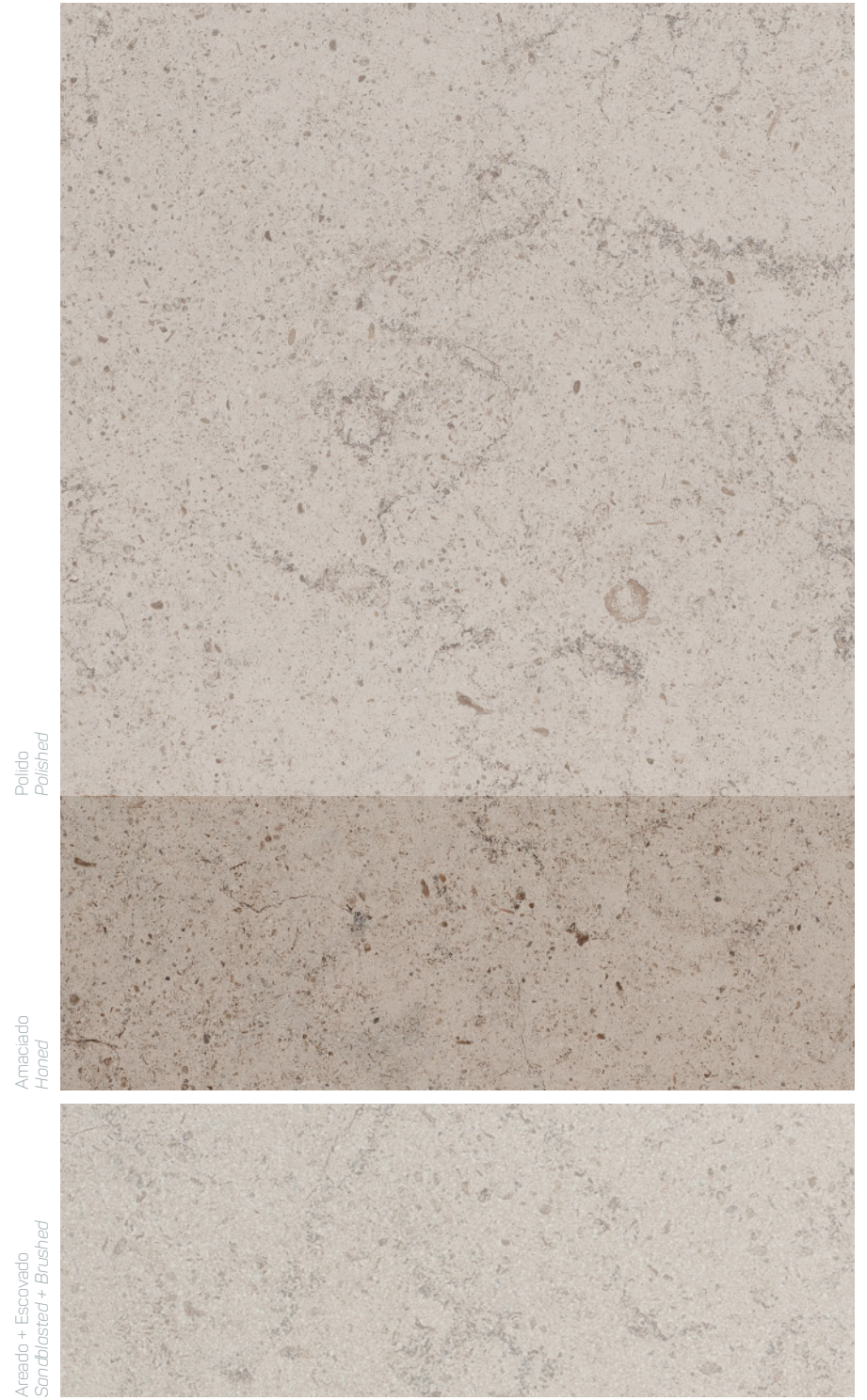


AZUL LOURINHÃ





MOCA CREME GMF



MOLEANOS GRAY

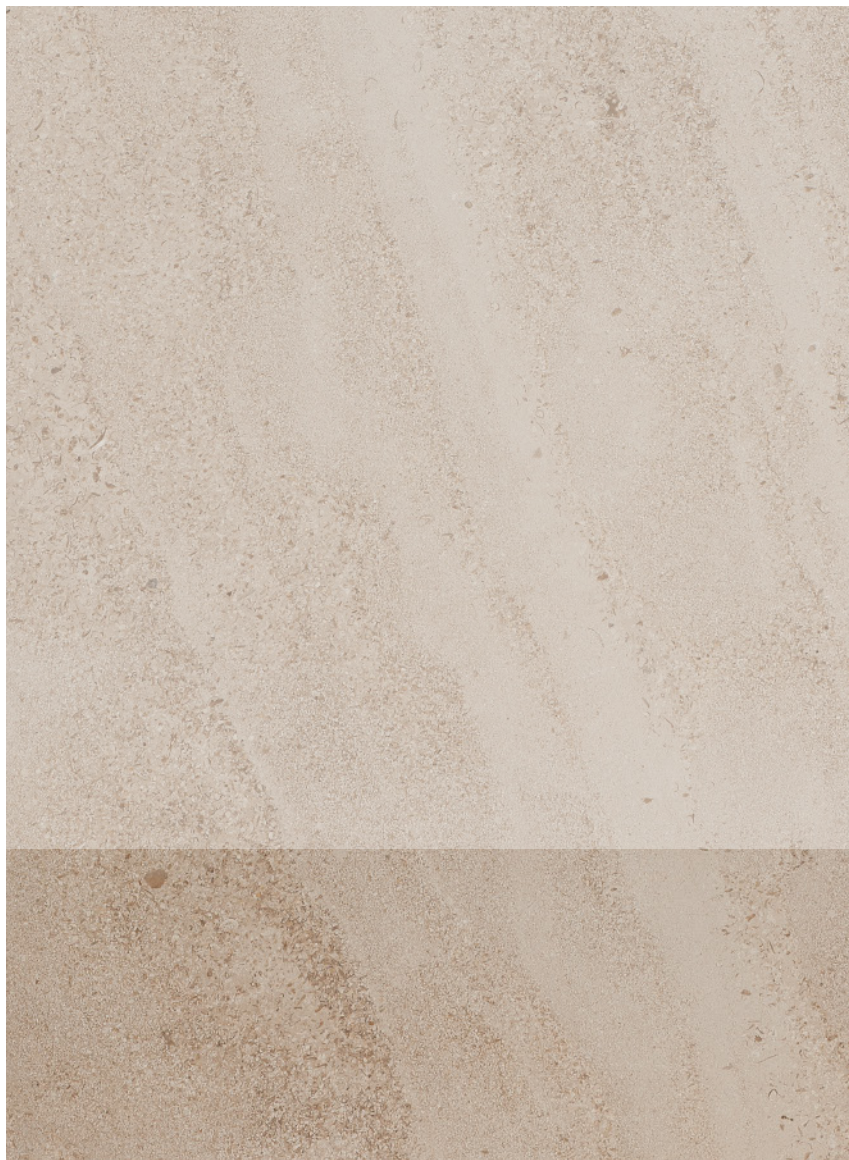


Chão: Moleanos Gray - Parede: Moca Creme GMF  
Floor: Moleanos Gray - Wall: Moca Creme GMF

Polido  
*Polished*

Amaciado  
*Honed*

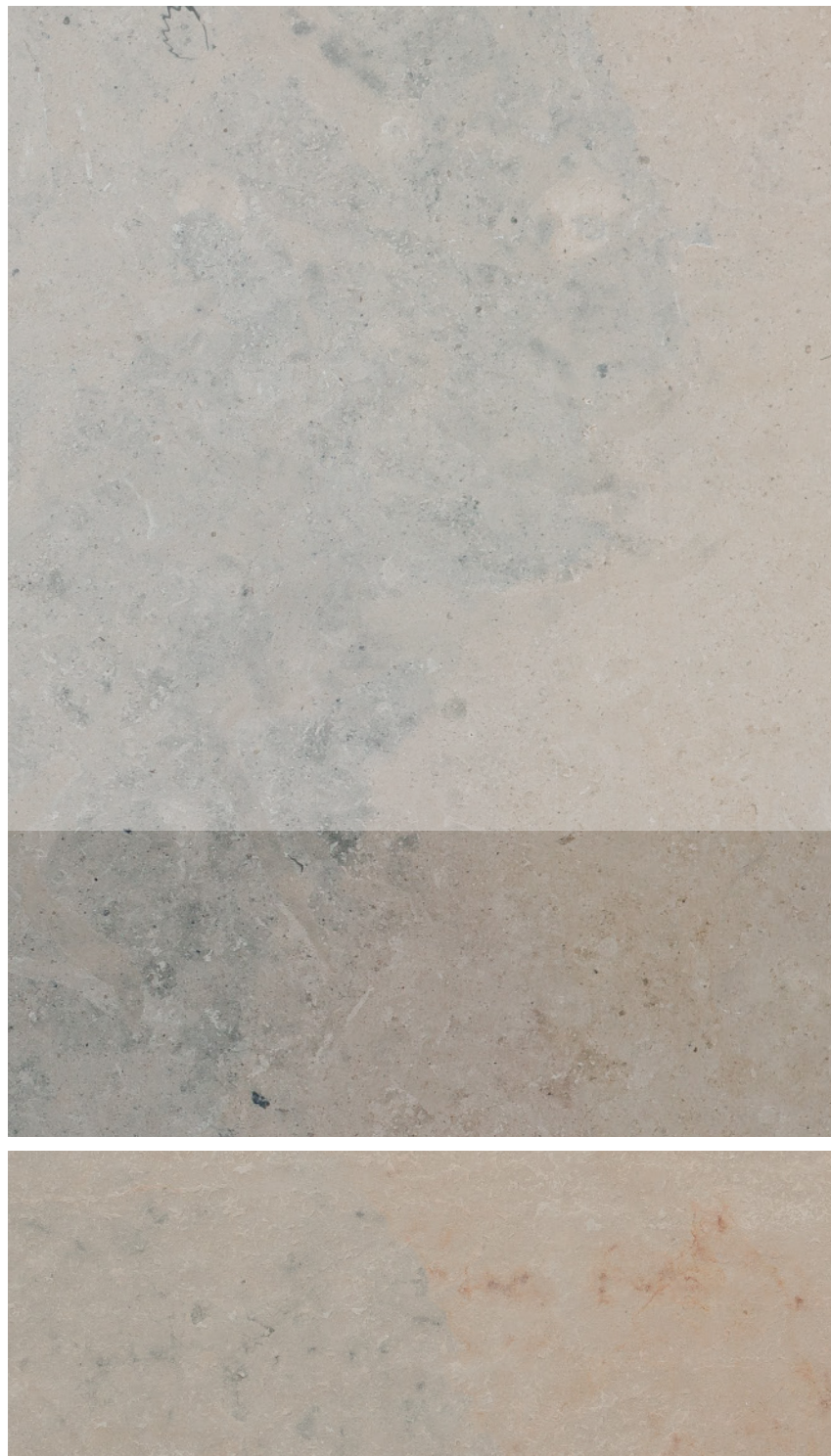
Areado  
*Sandblasted*



Polido  
*Polished*

Amaciado  
*Honed*

Flamejado  
*Flamed*



MOCA CREME FT

ATAÍJA MIX





SEMI-RIJO



MOLEANOS A2 AZUL CONTRA





Polido  
*Polished*



Amaciado  
*Honed*



Escovado  
*Brushed*



Polido  
*Polished*



Amaciado  
*Honed*



Riscado  
*Scratched*



CAP

ATAÍJA AZUL

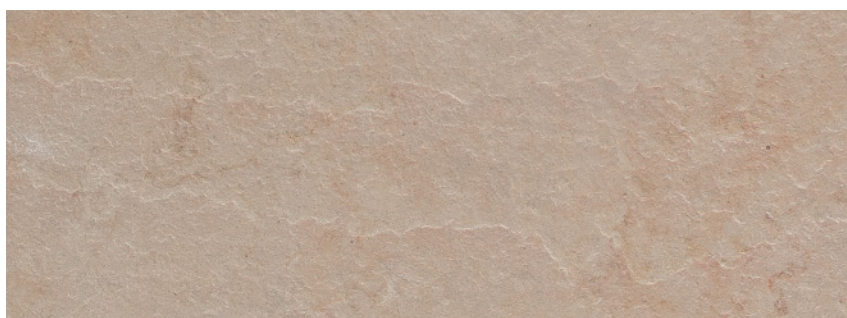




Polido  
Polished



Amaciado  
Honed

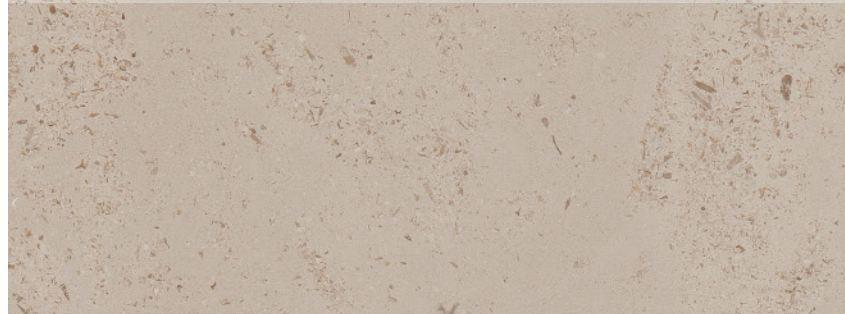


Flamejado  
Flamed

ATAÍJA CREME



Polido  
Polished



Amaciado  
Honed



Escovado  
Brushed

MOCA CREME GFF



Chão: Atajá Creme - Parede: Moca Creme GFF  
Floor: Atajá Creme - Wall: Moca Creme GFF



CUBOS ENVELHECIDOS  
*AGED CUBES*

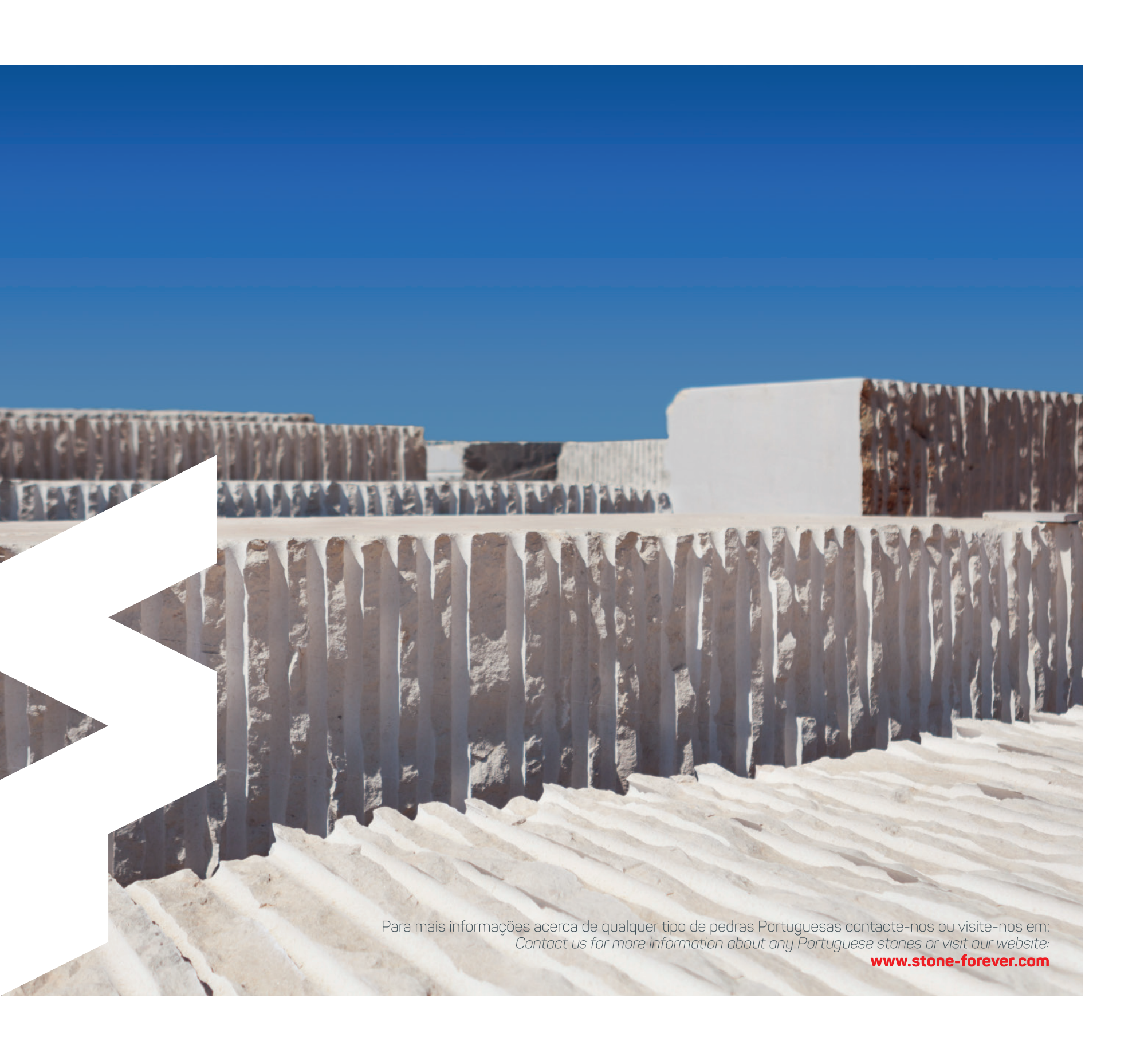


CUBOS FLAMEJADOS  
*FLAMED CUBES*



CALÇADA PORTUGUESA  
*PORTUGUESE PAVEMENT*





Para mais informações acerca de qualquer tipo de pedras Portuguesas contacte-nos ou visite-nos em:  
*Contact us for more information about any Portuguese stones or visit our website:*

[www.stone-forever.com](http://www.stone-forever.com)



**STONE  
FOREVER**

Natural Variety

[www.stone-forever.com](http://www.stone-forever.com)

IC 2, Km. 98, Pavilhão C - Ataija de Cima  
2460-713 Aljubarrota - Portugal  
T. +351 262 503 383  
F. +351 262 503 383  
[info@stone-forever.com](mailto:info@stone-forever.com)



QUADRO  
DE REFERÊNCIA  
ESTRATÉGICO  
NACIONAL  
PORTUGAL 2007-2013



**UNIÃO EUROPEIA**  
Fundo Europeu  
de Desenvolvimento Regional