



**STONE
FOREVER**

Natural Variety



QUEM SOMOS

A STONE FOREVER está localizada no centro de Portugal, na zona do maior maciço calcário da Península Ibérica, dedicando a sua actividade à extracção, transformação e comercialização de rochas ornamentais.

Recorrendo à mais recente tecnologia operada por recursos humanos qualificados e experientes, auferimos de uma grande capacidade de produção que nos permite uma resposta pronta e eficiente a um mercado nacional e internacional cada vez mais exigente, quer em quantidade, quer em qualidade.

Os nossos principais produtos são blocos, chapas e pedras cortadas à medida para variadas aplicações interiores e exteriores (fachadas, chão, etc.), nos mais diversos acabamentos.

Marcamos presença em diversas feiras internacionais e, fruto desta aposta, exportamos actualmente para os cinco continentes, satisfazendo os mais altos padrões de qualidade.

WHO WE ARE

STONE FOREVER is located in the center of Portugal, right in the Iberian Peninsula largest limestone massif area, dedicating its activity to the extraction, processing and commercialization of ornamental stones.

Using the latest technology operated by qualified and experienced human resources, we assure a large production capacity, enabling us to respond promptly and efficiently to an increasingly demanding national and international market, either in quantity or quality.

Our main products are blocks, slabs and cut to size tiles for various indoor and outdoor applications (wall cladding, flooring, etc.) in a wide range of finishes.

We are present in diverse international fairs and as result of this bet we currently export worldwide, meeting the highest standards of quality.

Polido
Polished



Amaciado
Honed



Bujardado
Bush-hammered



GASCOIGNE BEIGE

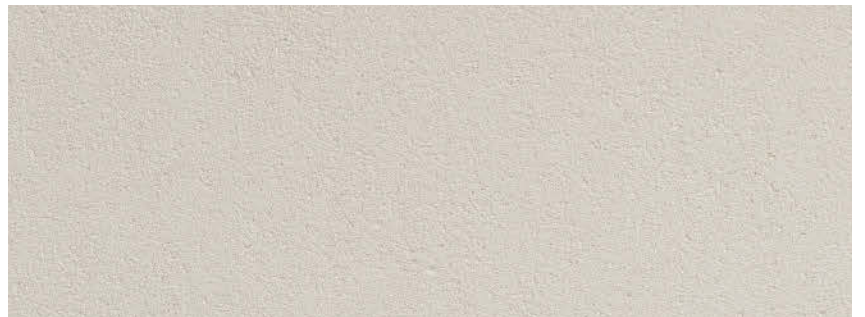
Polido
Polished



Amaciado
Honed



Areado
Sandblasted



CODAÇAL



Polido
Polished



Amaciado
Honed



Escovado
Brushed



GASCOIGNE BLUE

Polido
Polished



Amaciado
Honed



Escovado
Brushed



MOLEANOS A5



Polido
Polished



Amaciado
Honed

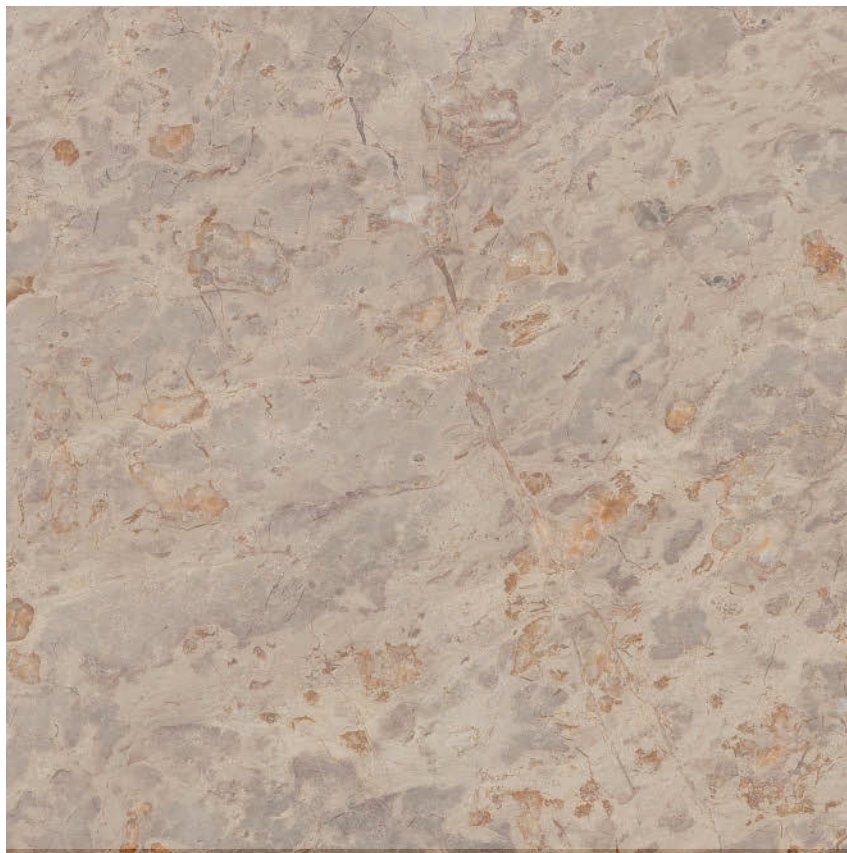


Areado + Escovado
Sandblasted + Brushed



MOLEANOS A2

Polido
Polished



Amaciado
Honed



Areado + Escovado
Sandblasted + Brushed



BRECHA STO. ANTÓNIO



Polido
Polished

Amaciado
Honed

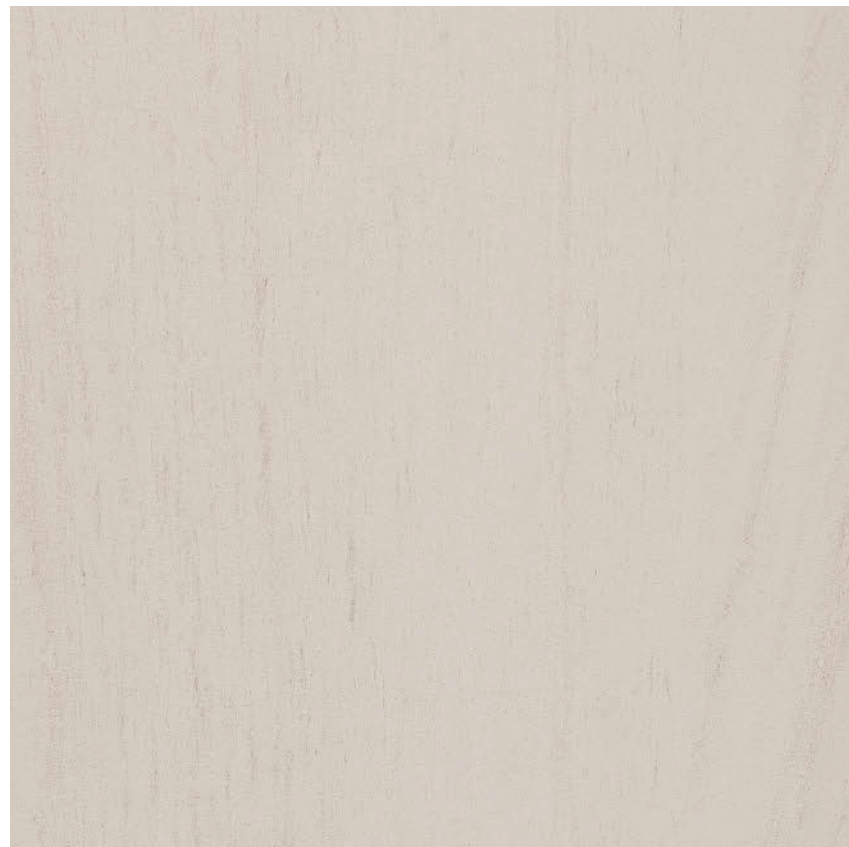
Areado + Escovado
Sandblasted + Brushed



Polido
Polished

Amaciado
Honed

Escovado
Brushed



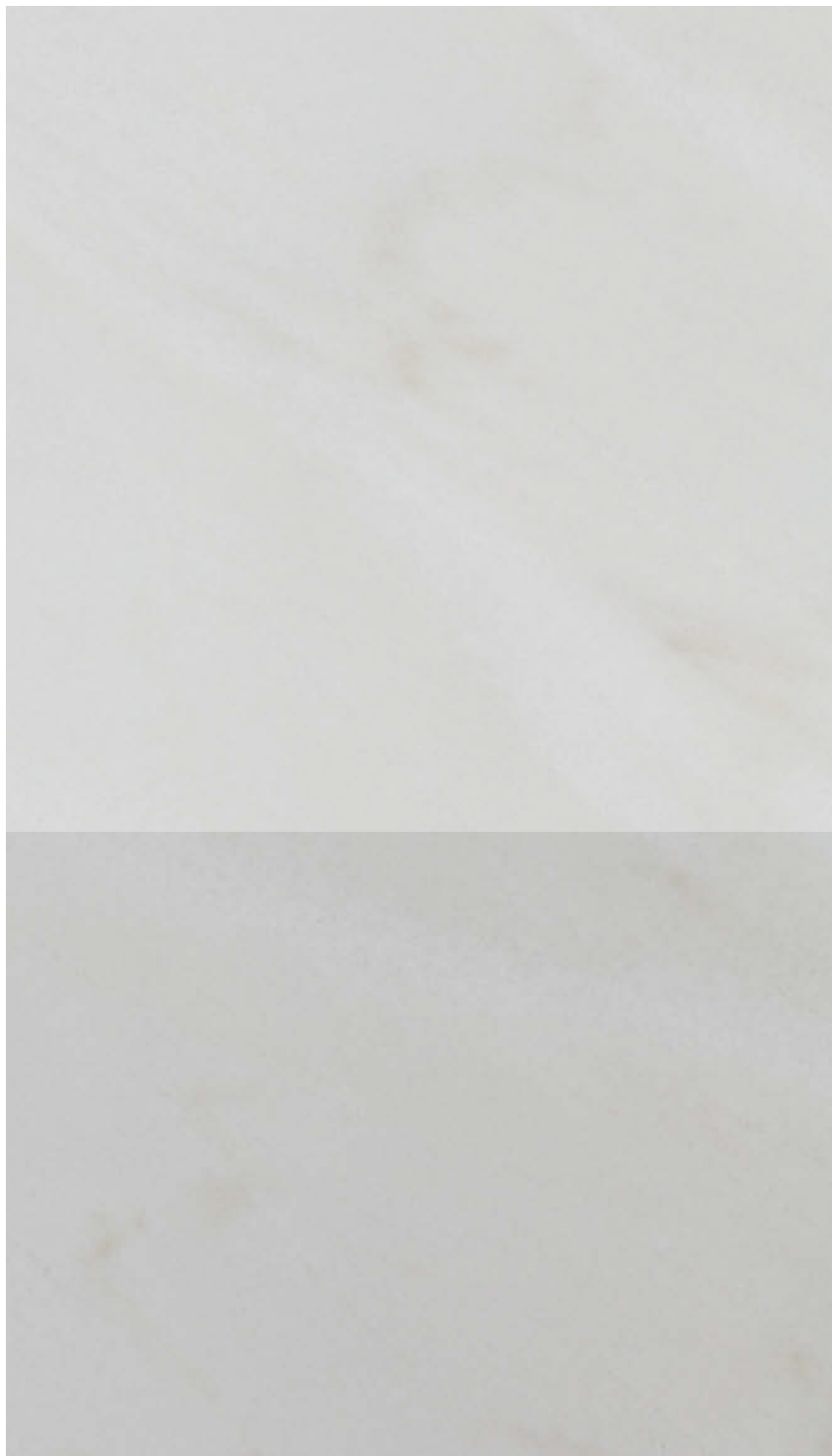
CEZAR BLUE

RELVINHA



Polido
Polished

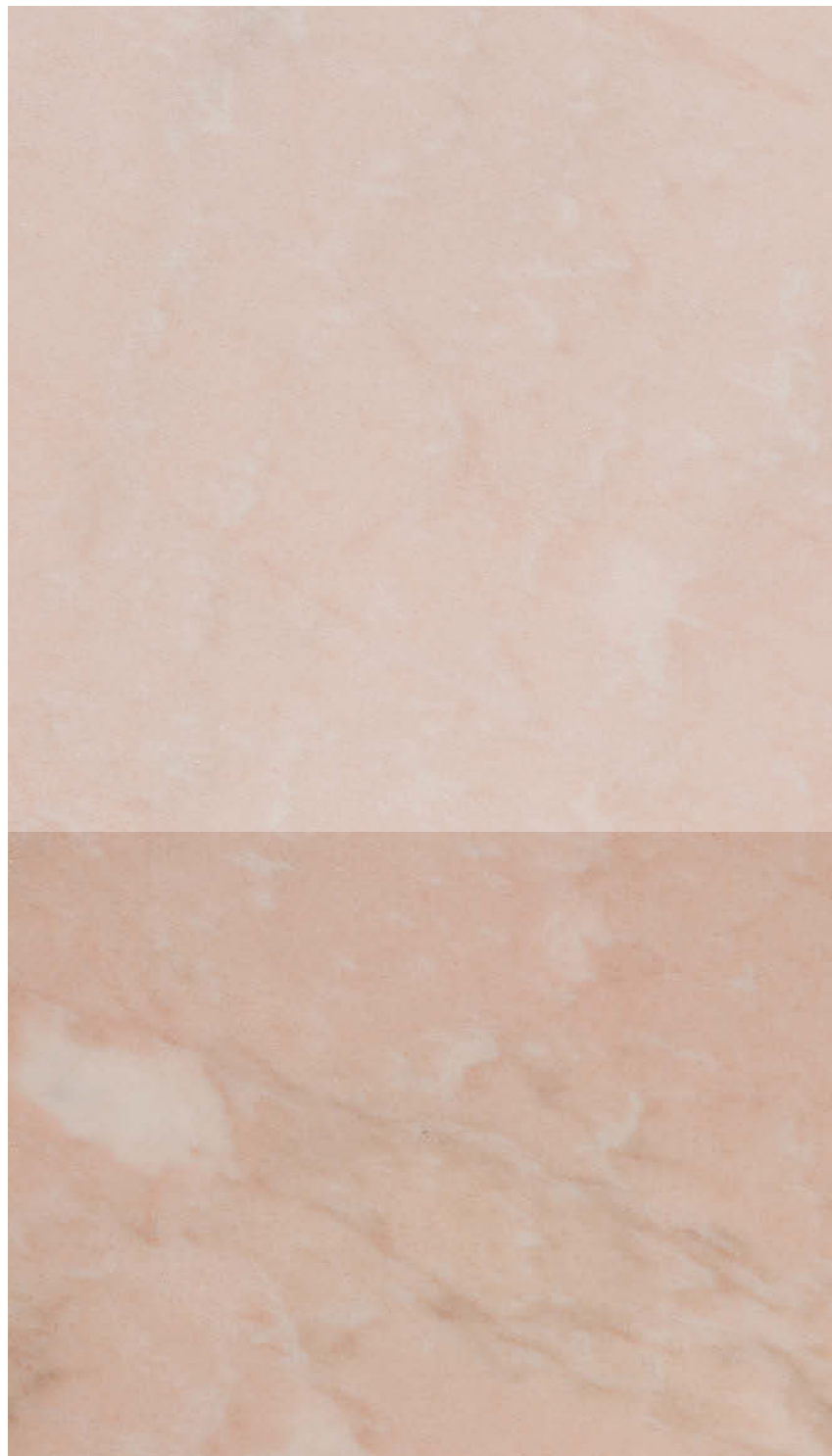
Amaciado
Honed



ESTREMOZ BRANCO

Polido
Polished

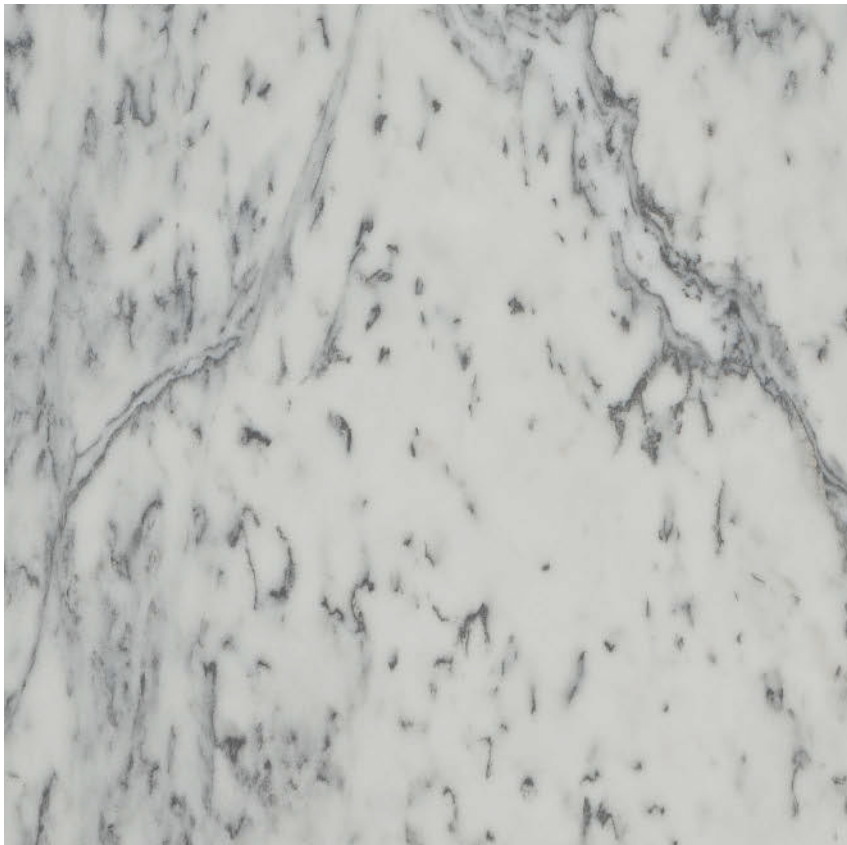
Amaciado
Honed



ESTREMOZ ROSA



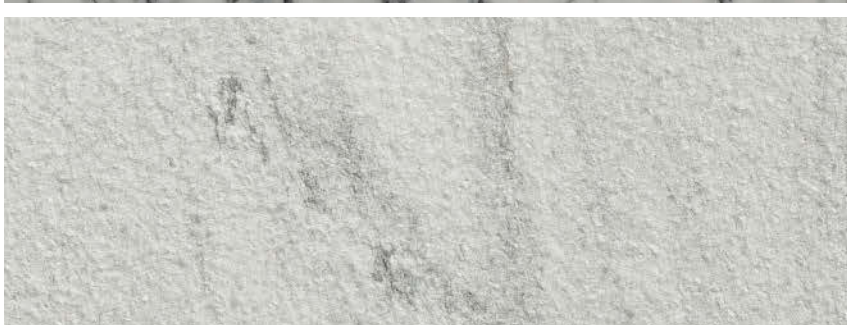
Polido
Polished



Amaciado
Honed



Bujardado
Bush-hammered



Polido
Polished



Amaciado
Honed



Riscado
Scratched



PELE DE TIGRE

AZUL LAGOA







Polido
Polished



Amaciado
Honed



Escovado
Brushed



MOCA CREME

Polido
Polished



Amaciado
Honed



Escovado
Brushed



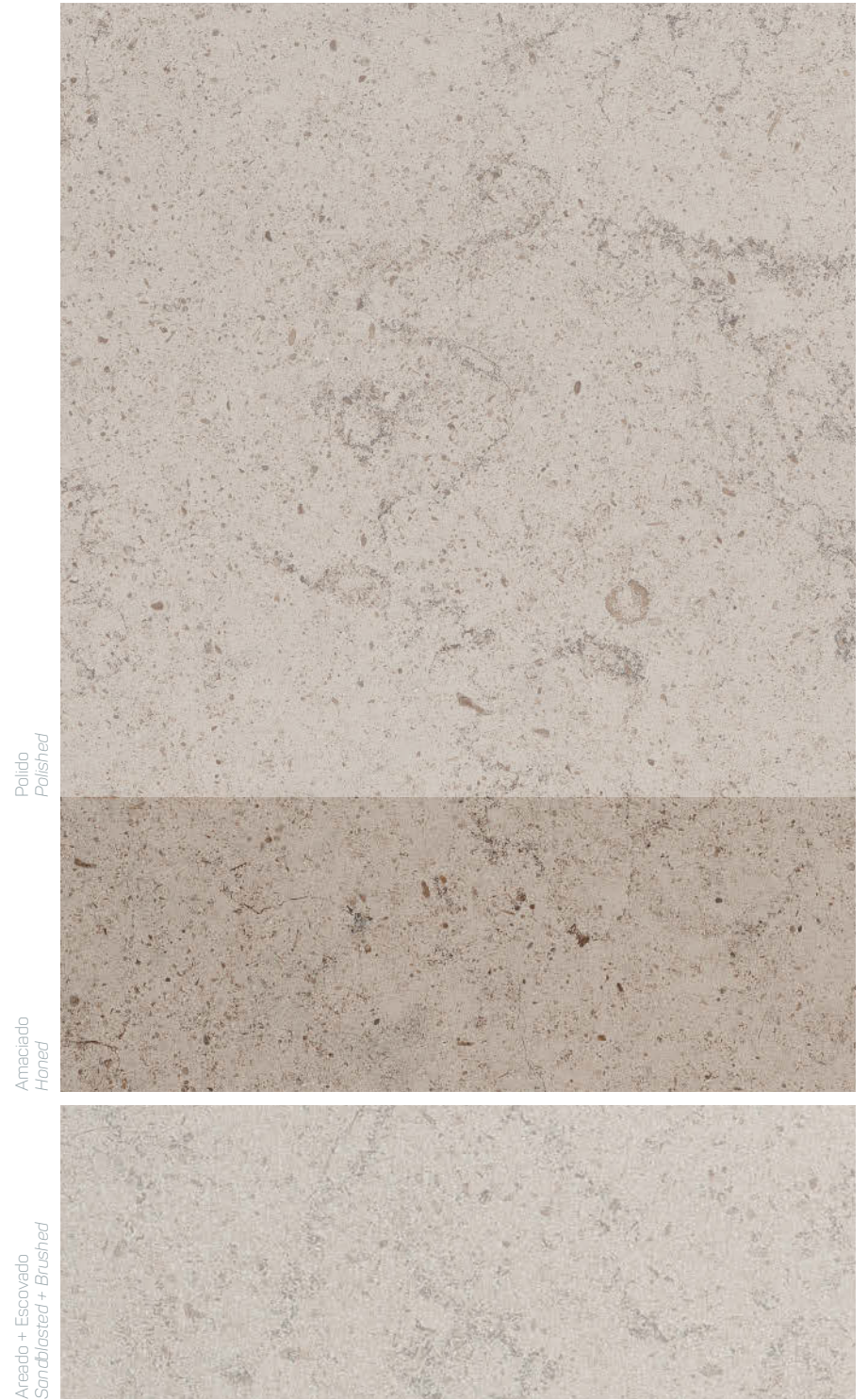
AZUL LOURINHÃ



Chão e revestimento da chaminé: Azul Lourinhã · Parede: Moca Crème
Floor and chimney covering: Azul Lourinhã · Wall: Moca Crème



MOCA CREME GMF



MOLEANOS GRAY

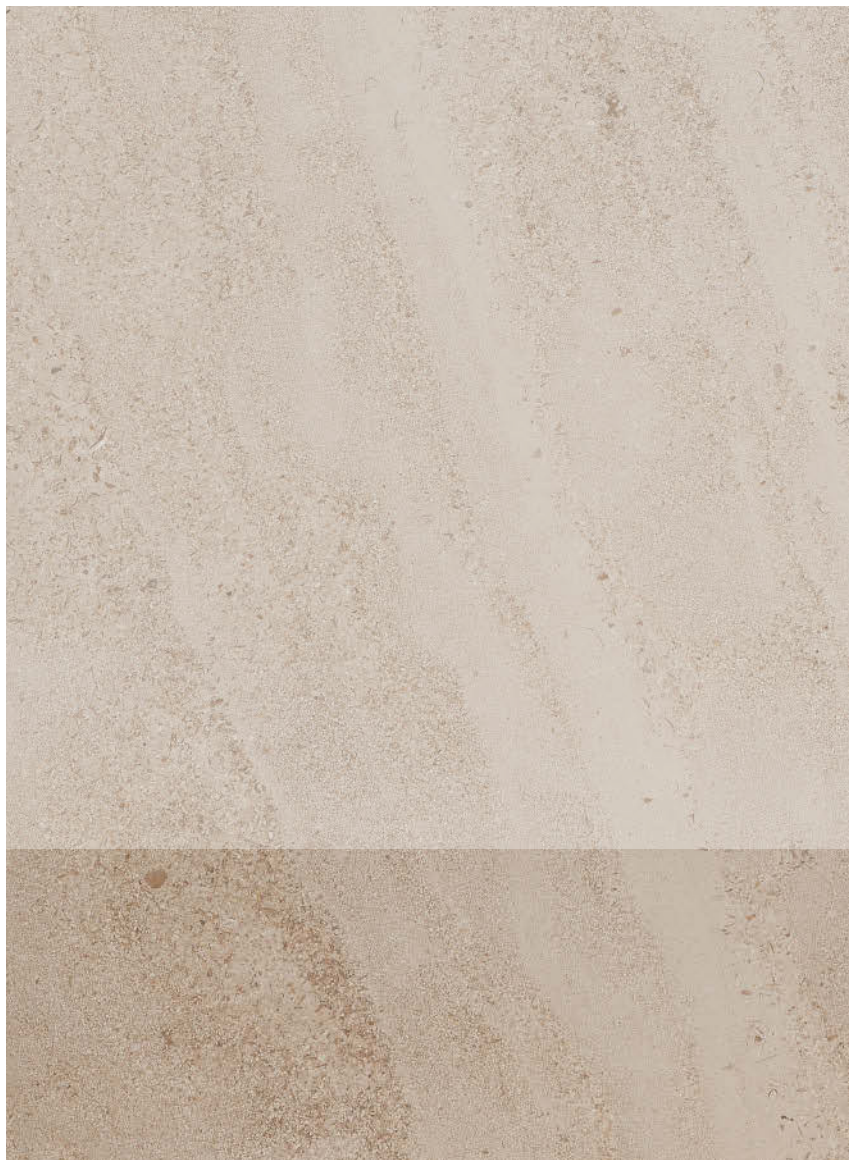


Chão: Moleanos Gray - Parede: Moca Creme GMF
Floor: Moleanos Gray - Wall: Moca Creme GMF

Polido
Polished

Amaciado
Honed

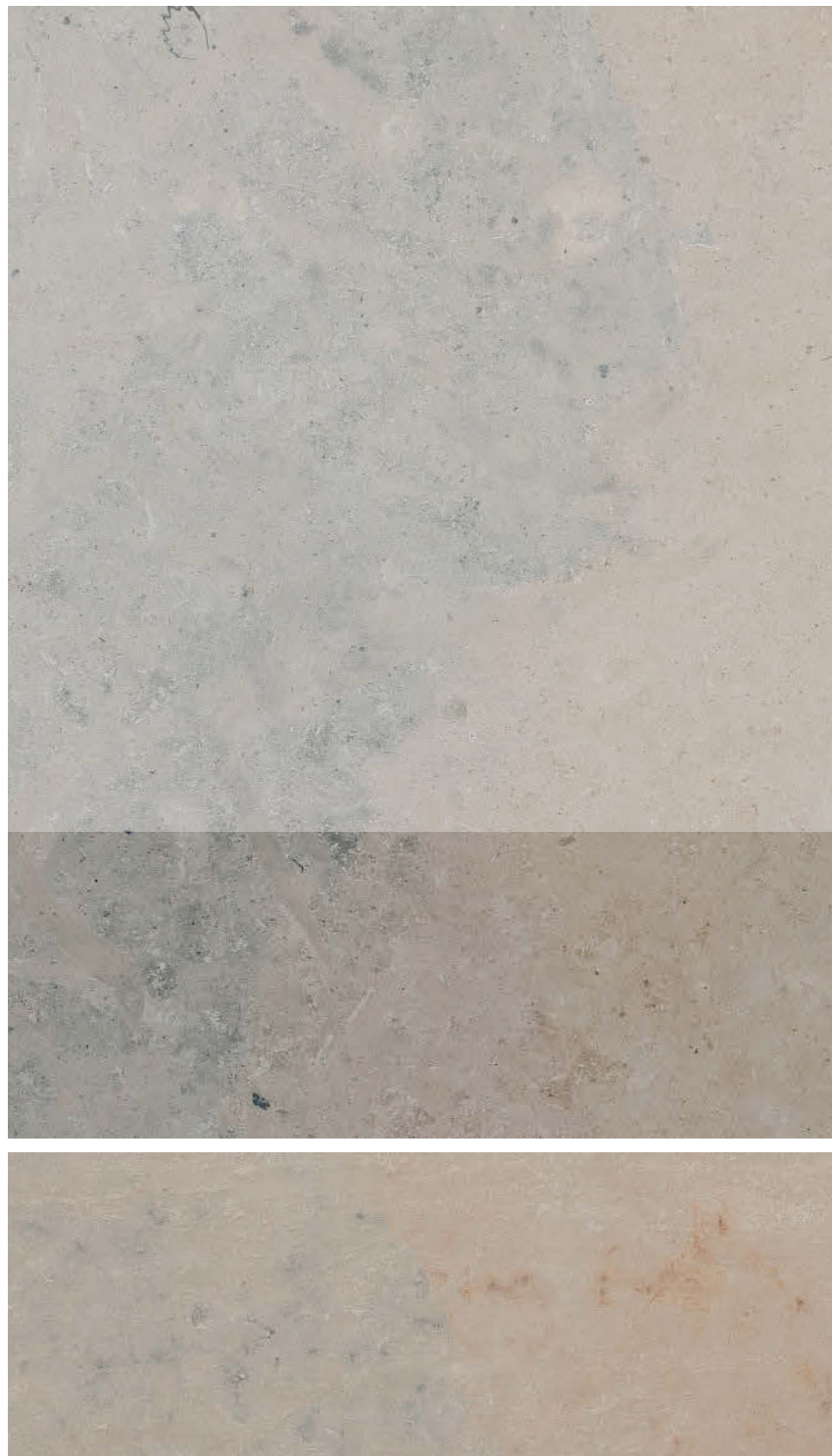
Areado
Sandblasted



Polido
Polished

Amaciado
Honed

Flamejado
Flamed



MOCA CREME FT

ATAÍJA MIX





SEMI-RIJO



MOLEANOS A2 AZUL CONTRA



Polido
Polished



Amaciado
Honed



Escovado
Brushed



CAP

Polido
Polished



Amaciado
Honed



Riscado
Scratched



ATAÍJA AZUL



Polido
Polished



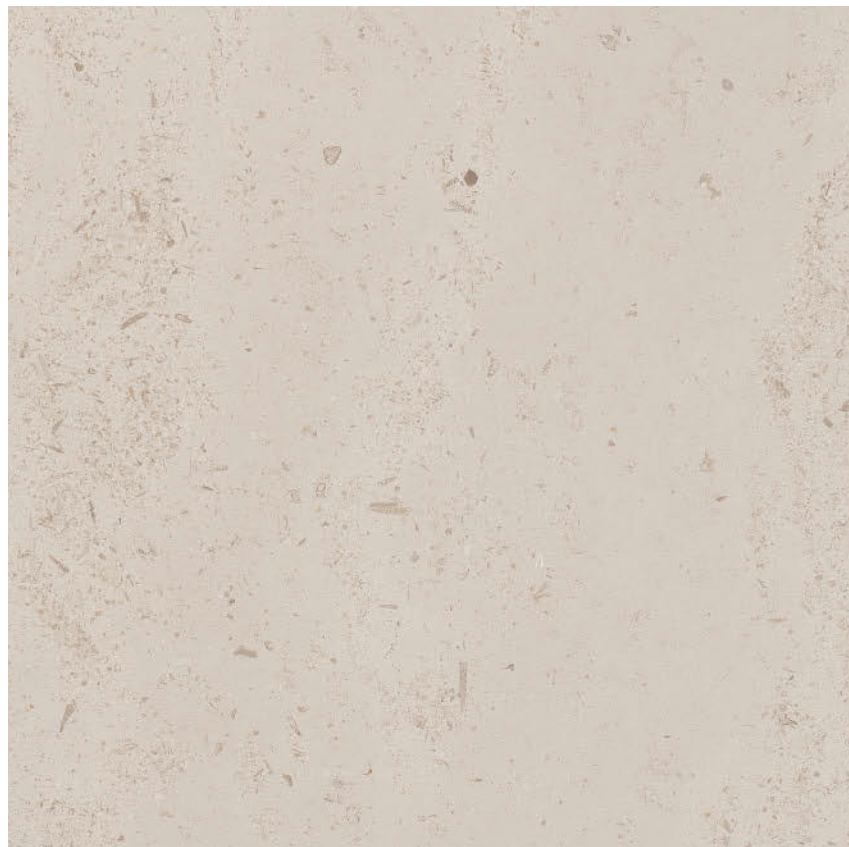
Amaciado
Honed



Flamejado
Flamed



Polido
Polished



Amaciado
Honed



Escovado
Brushed



ATAÍJA CREME

MOCA CREME GFF





CUBOS ENVELHECIDOS
AGED CUBES



CUBOS FLAMEJADOS
FLAMED CUBES



CALÇADA PORTUGUESA
PORTUGUESE PAVEMENT





Para mais informações acerca de qualquer tipo de pedras Portuguesas contacte-nos ou visite-nos em:
Contact us for more information about any Portuguese stones or visit our website:

www.stone-forever.com



**STONE
FOREVER**

Natural Variety

www.stone-forever.com

IC 2, Km. 98, Pavilhão C - Ataija de Cima
2460-713 Aljubarrota - Portugal
T. +351 262 503 383
F. +351 262 503 383
info@stone-forever.com



QUADRO
DE REFERÊNCIA
ESTRATÉGICO
NACIONAL
PORTUGAL 2007.2013



UNIÃO EUROPEIA
Fundo Europeu
de Desenvolvimento Regional